



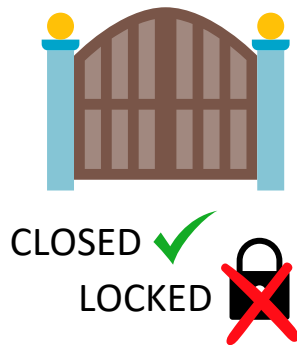
Evacuation Order Instructions



What you should do:

SECURE YOUR HOME

- Close all doors and windows and secure your home
- Leave the porch light or ground floor light on to assist with visibility in dense smoke
- Close gates but don't lock



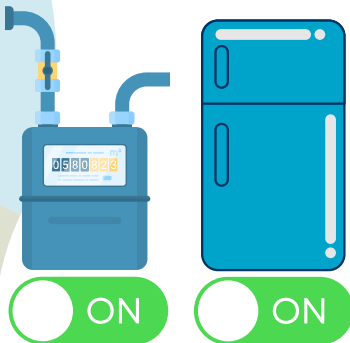
LEAVE NOW

- Consider taking a neighbour or someone in need if space allows
- Follow traffic directions and use designated route to exit the area
- Go to the Reception Centre to register and receive support



GAS AND FRIDGE 'ON'

- Keep natural gas turned on
- Keep fridges and freezers on
- Turn off all other appliances



PETS & LIVESTOCK

- Pet owners or hobby farmers contact ALERT for evacuation assistance: 250-809-7152
- Commercial farmers contact RDOS EOC: 250-490-4225



SECURE FIREARMS

- Secure your firearms in accordance with **Section 118 of Firearms Act**



RDOS Grab & Go Bag

